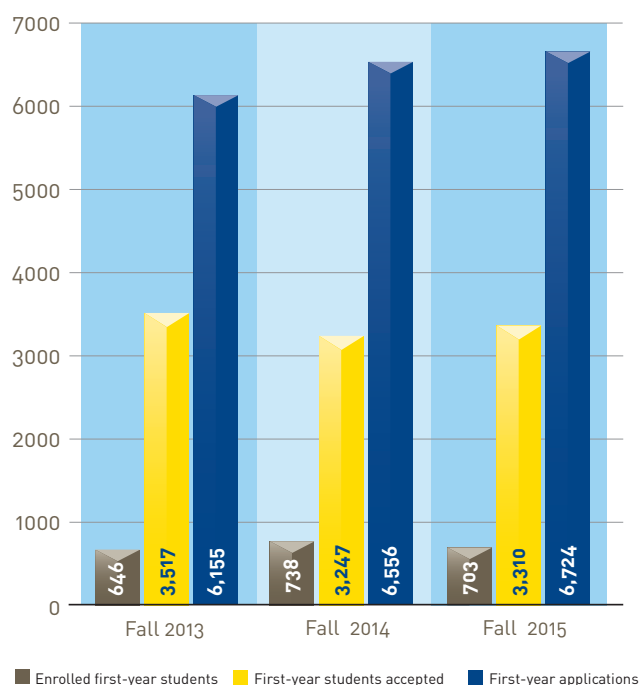


The Augustana Class of 2019

A profile of the incoming class can tell us more than numbers. These students are smart, artistic and they care about their communities. They're well-rounded and they bring various experiences. They're ready for the Augustana education that will challenge them further and prepare them to succeed throughout their lives.

2015-16 TOTAL ENROLLMENT: approximately 2,500



NUMBER OF HIGH SCHOOLS REPRESENTED: 335

HIGH SCHOOL GPA

(recalculated for academic courses only)

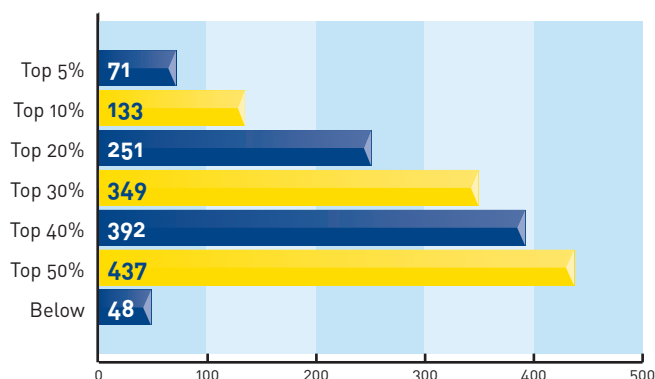
GPA RANGE	NUMBER OF STUDENTS
4.00-3.50	247
3.49-3.00	244
2.99-2.50	141
Below	36

TEST OPTIONAL

Total applied test-optional: **2%** of total applicant pool (107)
Total deposited: **7%** of a total pool (49)

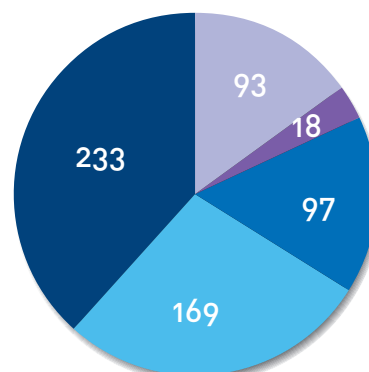
RANK IN CLASS

(485 of 668 students reported class rank)



STANDARDIZED TESTING

(middle 50% of students score between a 23 and 29)



ACT SCORE

30 and above (97)	27-29 (169)
23-26 (233)	20-22 (93)
19 and below (18)	

FINANCIAL AID

Federal Pell Grant Recipients: **26%** (176)
Presidential Scholarship Recipients: **29%** (191)
Dean's Scholarship Recipients: **30%** (197)
Founders Scholarship Recipients: **24%** (161)

FIRST-GENERATION COLLEGE STUDENTS: 204

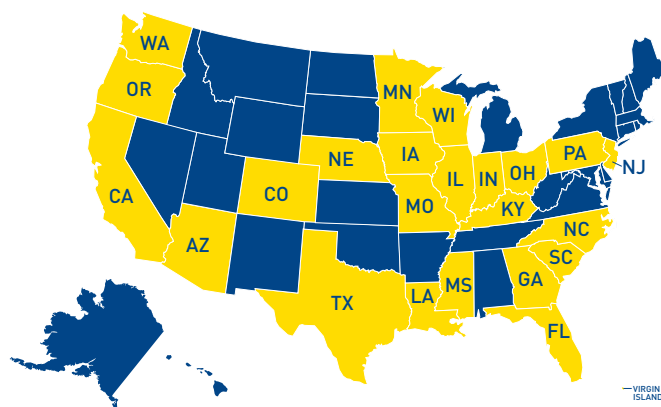
A bar chart showing the percentage of students who are Hispanic, African American, Asian American, Native American, and Multi-racial, broken down by year (Fall 2013, Fall 2014, Fall 2015). The Y-axis represents the percentage from 0 to 80. The X-axis lists the racial/ethnic groups. The legend indicates that dark blue bars represent Fall 2015, yellow bars represent Fall 2014, and brown bars represent Fall 2013.

Racial/Ethnic Group	Fall 2015 (%)	Fall 2014 (%)	Fall 2013 (%)
Asian American	13	23	14
African American	31	31	28
Hispanic	75	76	66
Native American	2	2	0
Native Hawaiian/ Pacific Islander	2	3	0
Multi-racial	25	24	37

Baptist	17	2.4%
Catholic	209	29.7%
Church of Christ	6	.8%
Episcopal	3	.4%
Greek Orthodox	2	.28%
Jewish	6	.8%
Lutheran (ELCA)	72	10.2%
Other Lutheran	8	.11%
Methodist	32	4.5%
Presbyterian	10	1.4%
Islam	0	00%
Other	146	20.8%
No religious preference	61	8.7%
No response/unknown	126	17.9%

Year	First-Year	Transfer
Fall 2012	32	0
Fall 2013	37	2
Fall 2014	42	5
Fall 2015	34	1

Number of countries or entities represented: 16
(Burundi, Canada, China, Colombia, Ethiopia, Ghana,
Sri Lanka, Myanmar, Nigeria, Nepal, Serbia, Sweden,
Switzerland, Trinidad and Tobago, Vietnam, Zimbabwe)



533 TOTAL GRADUATES

DEGREES AWARDED CLASS OF 2015 (%)

